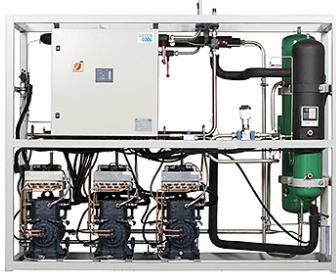
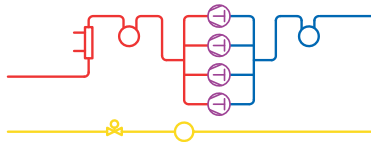


MISTRAL 345 LT



FLOW CHART



# MISTRAL

MISTRAL is a refrigeration/freezer unit with direct expansion on the evaporator/gas cooler/condenser side. The Unit is available as an air conditioning unit (HT), a refrigeration unit (MT) and a freezer unit (LT) in several capacities. MISTRAL is designed for the refrigerant carbon dioxide (R744) for the lowest environmental impact possible.

## GREEN CO<sub>2</sub>NTROL

Our units are standard equipped with GREEN CO<sub>2</sub>NTROL. The control system is user friendly, offers a complete surveillance of the establishment and also the possibility of remote control/steering.

### Options

- Air cooled gas cooler, • Superheat exchanger (model HE1), • Extra liquid receiver,
- Antivibration mounts, • Flexible sleeves on the heat exchanger, • Web-server,
- Commission/training, • Service kit (drying filter & burst disc), • Compressor oil.

High temperature (HT)	140 HT	280 HT	3120 HT	4150 HT	4200 HT
Unit	Air conditioning unit - Direct expansion				
Refrigerant	R744				
Refrigeration output (kW)	43	86	129	150	172
Swept volume	12.6	25.2	37.8	42.8	50.4
Compressor (quantity)	1	2	3	4	4
Evaporation temp. (°C)	+2	+2	+2	+2	+2
Measure L x W x H (mm)	1975 x 900 <sup>1</sup> x 1950		2480 x 900 <sup>1</sup> x 1950	3000 x 900 <sup>1</sup> x 1950	3000 x 900 <sup>1</sup> x 1950
Weight (Kg)	620 <sup>2</sup>	950 <sup>2</sup>	1150 <sup>2</sup>	1350 <sup>2</sup>	

Medium temperature (MT)	130 MT	260 MT	390 MT	4120 MT
Unit	Chiller unit - Direct expansion			
Refrigerant	R744			
Refrigeration output (kW)	30	60	90	120
Swept volume	12.6	25.2	37.8	50.4
Compressor (quantity)	1	2	3	4
Evaporation temp. (°C)	-10	-10	-10	-10
Measure L x W x H (mm)	1975 x 900 <sup>1</sup> x 1950		2480 x 900 <sup>1</sup> x 1950	3000 x 900 <sup>1</sup> x 1950
Weight (Kg)	620 <sup>2</sup>	950 <sup>2</sup>	1150 <sup>2</sup>	1350 <sup>2</sup>

Low temperature (LT)	115 LT	230 LT	345 LT	460 LT
Unit	Freezer unit - Direct expansion			
Refrigerant	R744			
Refrigeration output (kW)	13,5	27	40,5	54
Swept volume	12,6	25,2	37,8	50,4
Compressor (quantity)	1	2	3	4
Evaporation temp. (°C)	-34	-34	-34	-34
Measure L x W x H (mm)	1975 x 900 <sup>1</sup> x 1950		2480 x 900 <sup>1</sup> x 1950	3000 x 900 <sup>1</sup> x 1950
Weight (Kg)	620 <sup>2</sup>	1000 <sup>2</sup>	1200 <sup>2</sup>	1400 <sup>2</sup>

- Discharge temperature from gas cooler: +30°C
- Voltage & HZ: 400/3/50

- 1) Up to 1300mm depending on chosen option.
- 2) Basic weight without option.

We reserve the right to make modifications. Refrigeration outputs shown in the table are based on design temperatures. Some outputs are preliminary and should be determined in actual operational conditions as ambient temperature and water temperature will influence the output values.